



### Technical data

**Connection:** Thread acc. to DIN 2999

**Diameters size:** 3/8" up to 2"

**Pressure range:** PN40 (580 psi)

**Temperature range:** -20°C up to +120°C  
(depending from working pressure)

### Materials:

- Body: brass nickel plated
- Ball: brass chrome plated
- Ball seals: PTFE
- Handle: steel zinc plated with red colour

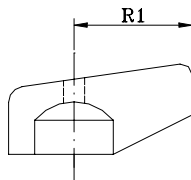
**Application:** House- and sanitary technology, Plant factory for media: Water, Oils, Fuels, Compressed air etc.

### Design features:

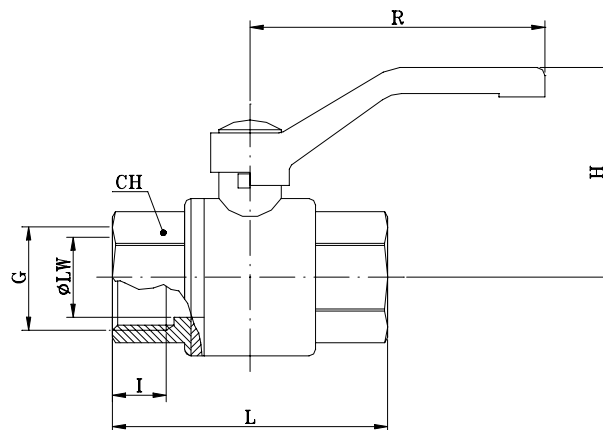
- Full bore
- ♦ Thread acc. to NPT, Oil and grease free (optional)

📄 **More information on your inquiry**

Art. 381 (t-handle up to 1 1/4")



Art. 380



Dimensions in mm

G	1/8"	1/4"	3/8"	1/2"	3/4"	1"	1 1/4"	1 1/2"	2"	2 1/2"	3"	4"
øLW	9	9	11	15	20	25	32	40	50	63	74	100
L	45	45	48	60,5	70	83	95,5	105	129	154,5	176	216
H	42	42	43	44	48	59	71	87	118	128	138	151
R	73	73	73	83	83	90	110	130	190	200	270	270
R1	27	27	27	27	27	43	50	-	-	-	-	-
I	12,2	12,2	12,7	16,5	18	21	23,4	23,4	28,2	32,5	35,5	40
CH	19	19	22	26	32	41	50	55	70	82	100	128
KV	6,5	6,5	7,3	13	25	49	100	140	215	-	-	-
PN	40	40	40	40	40	40	40	40	40	40	40	40
Kg	0,20	0,20	0,30	0,40	0,50	0,60	0,90	1,40	2,05	4,30	7,20	9,80