



Technical data

Connection: Thread acc. to DIN 2999

Diameters size: 1/4" up to 2"

Pressure range: PN1 (for Gas) PN40 (for liquids)

Temperature range: -20°C up to +120°C
(depending from working pressure)


Materials:

- Body: brass nickel plated
- Ball: brass chrome plated
- Ball seals: PTFE
- Handle: steel zinc, yellow

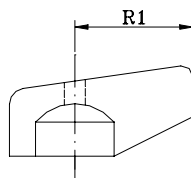
Application: House- and sanitary technology, Plant factory for media: Gases, Water, Oils, Fuels, Compressed air etc.

Design features:

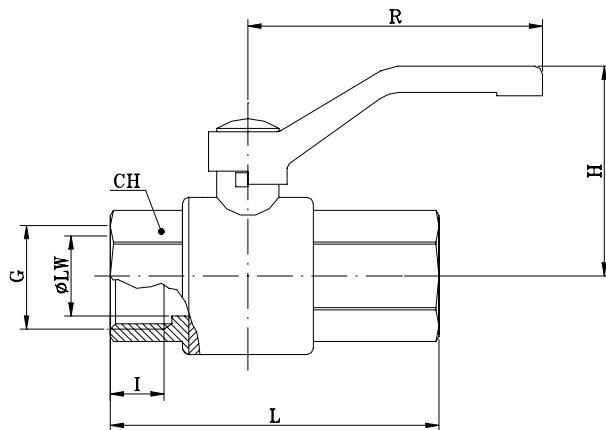
- Full bore • Steam seal with 2 O-rings
- ♦ Thread acc. to NPT, Oil and grease free (optional)

 **More information on your inquiry!**

Art. 431 (t-handle up to 1 1/4")



Art. 430



Dimensions in mm

G	-	1/4"	3/8"	1/2"	3/4"	1"	1 1/4"	1 1/2"	2"	-	-	-
øLW	-	9	11	15	20	25	32	40	50	-	-	-
L	-	50	55	75	80	90	110	120	140	-	-	-
H	-	40	41	42	45	57	69	84	114	-	-	-
R	-	73	83	83	83	90	110	130	190	-	-	-
R1	-	27	27	27	27	43	50	-	-	-	-	-
I	-	12,2	12,7	16,5	18	21	23,4	23,5	28,2	-	-	-
CH	-	19	22	26	32	41	50	55	70	-	-	-
KV	-	6,5	7,3	13	25	49	100	140	215	-	-	-
PN	-	1/40	1/40	1/40	1/40	1/40	1/40	1/40	1/40	-	-	-
Kg	-	0,15	0,15	0,20	0,30	0,50	0,70	1,10	1,70	-	-	-